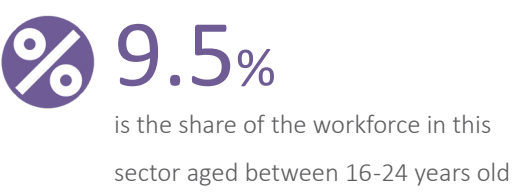
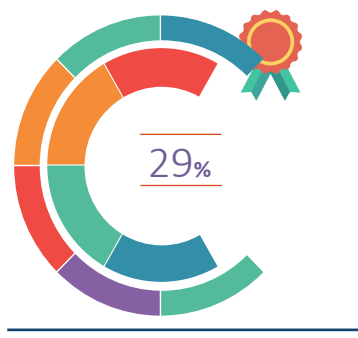
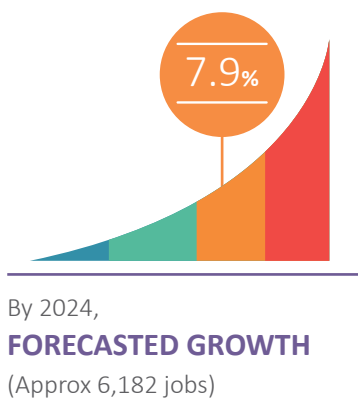


HEALTH AND LIFE SCIENCES

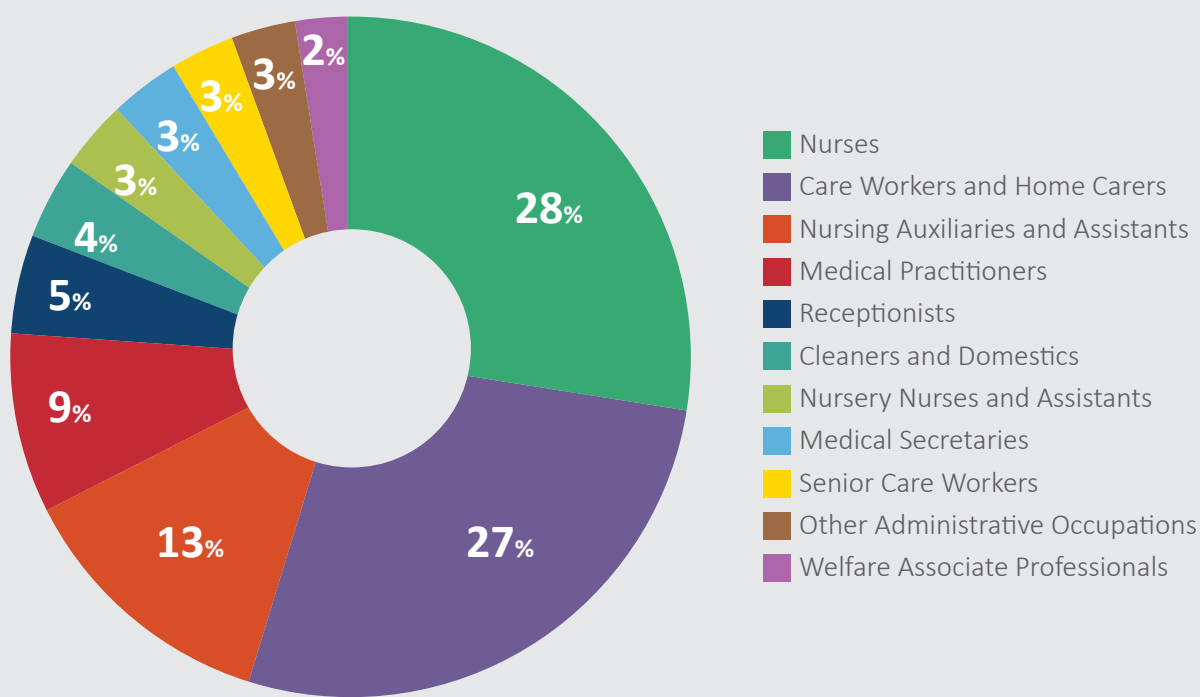
The West of England is home to the Bristol Royal Hospital for Children, Royal United Hospital, and the University of the West of England's Department of Nursing and Midwifery, which co-hosts the Centre for Health and Clinical Research. The area has a fast growing number of private sector companies and social enterprises, focused on driving innovation in the health and life sciences fields in areas such as assisted living, diagnostics, electronics, and hospital infrastructure.

All data represents the West of England

SIZE OF SECTOR



EMPLOYMENT AREAS



ADVERTISED SALARIES



Occupation	Average annual salary (£)
Nurses	25k
Care Workers and Home Carers	18k
Nursing Auxiliaries and Assistants	29k
Medical Practitioners	28k
Receptionists	17k
Cleaners and Domestic	14k
Nursery Nurses and Assistants	14k
Medical Secretaries	27k
Senior Care Workers	25k
Other Administrative Occupations	17k
Welfare Associate Professionals	15k

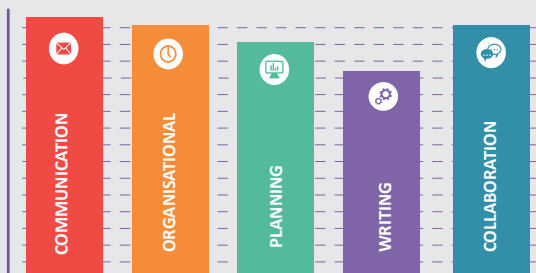


SKILLS IN DEMAND



Soft skills

Analysing West of England job postings from 2017 shows employers identify these soft skills as crucial to be successful in this sector



Hard skills

Analysing West of England recruitment data from 2017 shows specialist and technical skills are in demand, and people with these skills will be more likely to obtain high-skilled and high-paying jobs within this sector



Specialist skills

Specialist

- Data Entry
- Microsoft Excel
- Microsoft Word
- Information Security
- CISCO
- Secretarial

Programming

- LINUX
- Selenium
- Python
- JAVA
- Oracle
- SQL Server

Business

- Product Sales
- Customer Service
- Procurement
- Project Management
- Office Administration
- Business Development



EMPLOYERS

with the most advertised vacancies over the past 12 months in the West of England

- NATIONAL HEALTH SERVICE
- NEWCROSS HEALTHCARE
- CARE UK
- CM CARE
- DEAN HEALTHCARE
- CARE COM LIMITED
- UNIVERSITY OF BRISTOL
- SHAW HEALTHCARE
- SPIRE HEALTHCARE
- HEALTH CARE GROUP LIMITED
- BARCHESTER HEALTHCARE
- FOUR SEASONS HEALTHCARE
- ST MONICA TRUST
- PRIORY GROUP
- AGINCARE
- HOUSING & CARE 21
- GRACEWELL

Sources

- 1) Labour Insights/Burning Glass Technologies, May 2016 - May 2017/ WestofEnglandLEP
- 2) EMSI/WestofEnglandLEP
- 3) BusinessWest/Health and Life Sciences Statement 2017

Partners,



Education & Skills
Funding Agency

